

# aurender FLOW

## Quick Start Guide

1. Aurender FLOW
2. Using with iPhone® / iPad®
3. Using with Android™ Phone
4. Using with Mac® or Windows® PC
5. Package Contents



FLOW Quick Start Guide : 1504\_01

## 2. Using an iPhone or iPad



- \* To listen to high resolution files exceeding 16/44.1kHz, a proper third party program is required.
- \* mSATA external storage is not supported when used with iOS devices.

## 1. aurender FLOW



- \* Playback controls may not work depending on the software being used.

## 3. Using an Android Phone



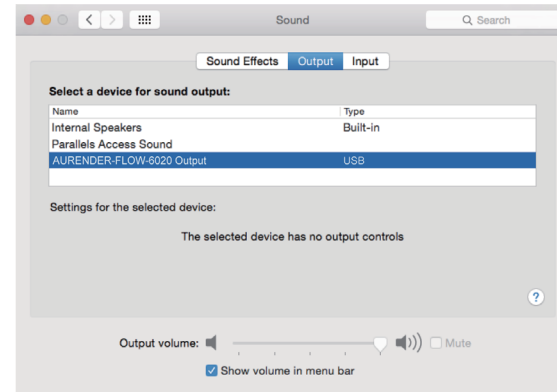
- \* To listen to high resolution files exceeding 16/44.1kHz, a proper third party program is required.

## 4. Using a Mac or Windows PC

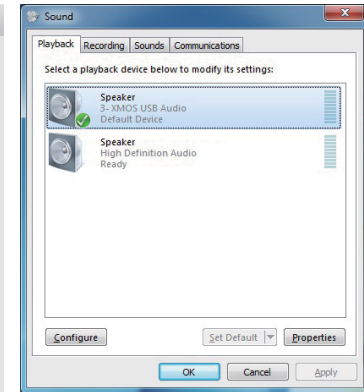
- \* After connecting Flow to a Windows PC, download and install the driver ([www.aurender.com/page/download](http://www.aurender.com/page/download)) before using Flow. No drivers are needed for Mac PCs.



\* For fast file transfer from Mac/PC to mSATA drive(optional) inside the FLOW, USB 3.0 cable is recommended. For music playback, USB 2.0 cable can also be used.



[ Picture 1 ] OSX (10.9 or later)



[ Picture 2 ] Windows 7

Android is a trademark of Google Inc.  
iPhone, iPad, and Mac are trademarks of Apple Inc.  
Windows is a registered trademark of Microsoft Corporation.

When using Flow with a PC, it will turn on automatically when connected to the PC. Use your media player to play music, adjust the volume and enjoy.

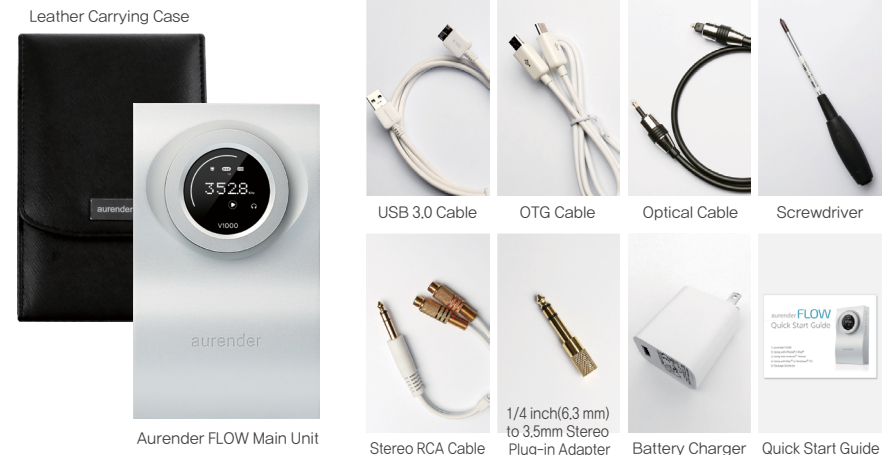
The default volume is set to -90dB. Whenever the headphone jack is unplugged, the volume will be reset to -90dB. The volume control will only work when the headphone jack is plugged.

If there is no sound, please check to see that Flow is set as the output device on your PC.

- For Mac PCs, please refer to the screenshot [Picture 1].
- For Windows PCs, please refer to the screenshot [Picture 2].
- Turn up the volume gradually, until you start to hear music. For most headphones, you should start hearing music at around or over -60dB.

For more detailed instructions, specifications and drivers, please refer to our website at [www.aurender.com](http://www.aurender.com)

## 5. Package Contents



- \* Please use the screwdriver included when you open the back cover of the unit. It is only used when you want to insert the mSATA drive(separate purchase). It is not recommended for other usages.  
\* DC Adapter included will vary depends on the countries